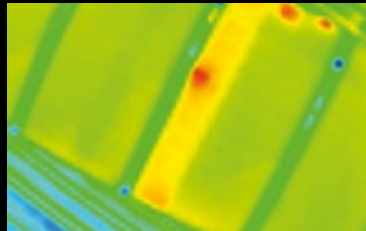
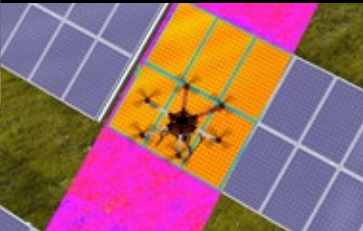




**SSM**

SMART SOLAR  
MAINTENANCE

We get the maximum profitability out  
of your solar plant



**TSO**

the south oracle

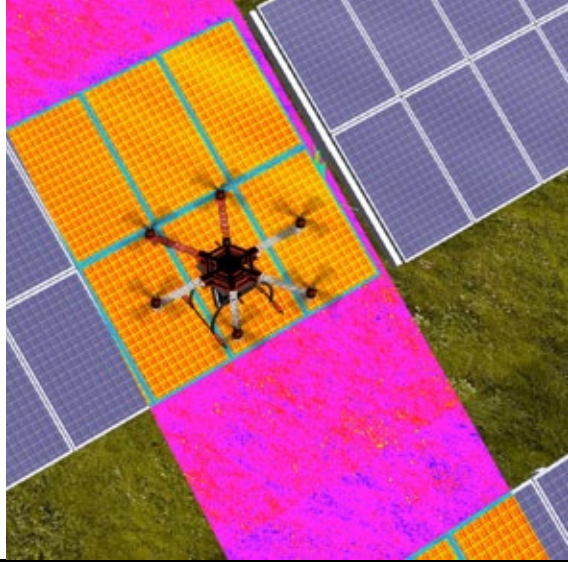
“Innovating to open new markets for Solar Energy”

# WE RECOVER the lost energy

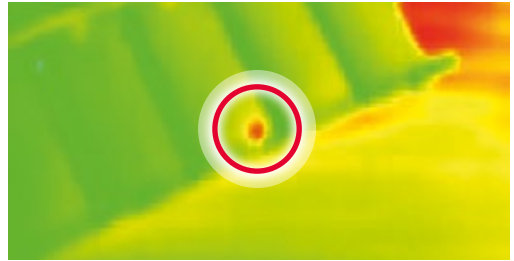
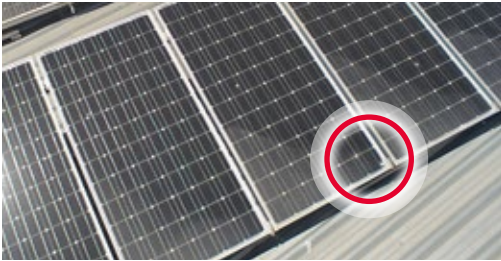
2% of your modules will fail during operation, causing economic losses of up to 27% of your income.

SSM, Smart Solar Maintenance, can help you recover up to 75% of these losses.

Our multidisciplinary team, composed by PhDs in Solar Photovoltaics, specialized Engineers and certified RPA pilots of proven experience will develop the appropriate report to repower and optimize your solar plant.



# Recover up to 75%



## EXAMPLES OF RECOVERY WITH SSM, DEPENDING ON PLANT TYPE:

- A. Ground-mounted, 1,89 nominal megawatts (MWn), fixed, Spanish Royal Decree (RD) 661/2007, installed in 2007.
- B. Ground-mounted, 1,89 MWn, two-axis tracking, RD 661/2007, installed in 2008.
- C. Rooftop, 200 nominal kilowatts (kWn), RD 1578/2008, zone 4, installed in 2009.
- D. Rooftop, 200 kWn, RD 1578/2008, zone 4, installed in 2013.
- E. Rooftop, 200 kWn, non-subsidized, self-consumption, zone 4, installed in 2017.

<b>Plant type</b>
<b>Your plant loses, per year</b>
<b>Loss over total income</b>
<b>If you invest in repowering, per year...</b>
<b>... you will recover net*, per year</b>
<b>In total, you will recover</b>
<b>% Recovered</b>

1. We request the historical production data of your solar plant.
2. We evaluate your losses and the recovery potential through SSM.
3. If SSM is profitable for you, we will send you a customized offer.
4. After payment of 50%, we carry out an aerial inspection with our drones equipped with IR/EL cameras (thermography and electroluminescence).
5. We identify, classify and geo-localize all failed modules.
6. We provide a complete report, which includes:
  - a) State of your plant
  - b) Proposal to recover your losses in the most optimum way
7. Payment of 50% at report reception.

## of your energy losses

<b>Our OFFER</b>	<b>Ground-mounted plants up to 5 MW</b>	<b>€ 4.965</b>	<b>Rooftop plants from 100 kW to 1 MW</b>	<b>€ 2.750</b>
------------------	---	----------------	---	----------------

It includes (ask for other type of plant):

- Aerial inspection of the plant with our drones, equipped with IR and EL cameras.
- Complete report of the state of the plant and of a proposal for Optimized Smart Repowering.

It does not include: V.A.T.; travel to plant from El Puerto de Santa María (Cádiz, Spain).

A	B	C	D	E
€ 20.890,37	€ 27.578,89	€ 3.357,63	€ 6.070,81	€ 15.024,86
1,53%	1,62%	3,31%	6,54%	26,62%
€ 6.477,00	€ 6.382,50	€ 2.891,18	€ 2.864,29	€ 2.846,00
€ 12.026,47	€ 18.221,72	€ 126,50	€ 2.725,47	€ 11.042,51
<b>€ 180.397,08</b>	<b>€ 291.547,59</b>	<b>€ 2.150,43</b>	<b>€ 57.234,82</b>	<b>€ 276.062,83</b>
<b>58%</b>	<b>66%</b>	<b>4%</b>	<b>45%</b>	<b>73%</b>

\* Includes investment in repowering and our fees. Average values taking each plant type into account. We carry out the specific loss study for your plant.

# Our Services



## PRELIMINARY REPORT

- Exhaustive analysis of the historical production data of your plant
- Study of losses potentially due to failed modules
- Preliminary report on the profitability brought by SSM
- Customized offer including the profitability brought by SSM

## DATA COLLECTION

- Planning of flight over your plant
- Management of due flight permits
- Flight over your plant and taking of thermographic and visible image, with the guarantee given by the expertise and professionalism of our authorized RPA pilots

## DATA ANALYSIS

- Detailed analysis of all images taken
- Detection of modules presenting failures
- Geo-localization of the failures
- Classification by failure type and best management proposal
- Exhaustive analysis of the options to repair/substitute the modules, considering the components, the location and the assigned tariff
- Proposal of optimized recovery of the losses

## FINAL REPORT

- Describing the historical and current situation of your plant
- Including all detected failures, which are identified, geo-localized and classified
- Proposing an optimum recovery of the losses

# TSO

the south oracle

“Innovating to open new markets for Solar Energy”

+34 954 562 955

[www.thesouthoracle.com](http://www.thesouthoracle.com)

Paseo de las Delicias, 1. 41001 Seville (Spain)

[info@thesouthoracle.com](mailto:info@thesouthoracle.com)



UNIÓN EUROPEA  
Fondo Social Europeo  
*El FSE invierte en tu futuro*



**WORLD ALLIANCE**  
for EFFICIENT SOLUTIONS

Associated Company      Founding Member